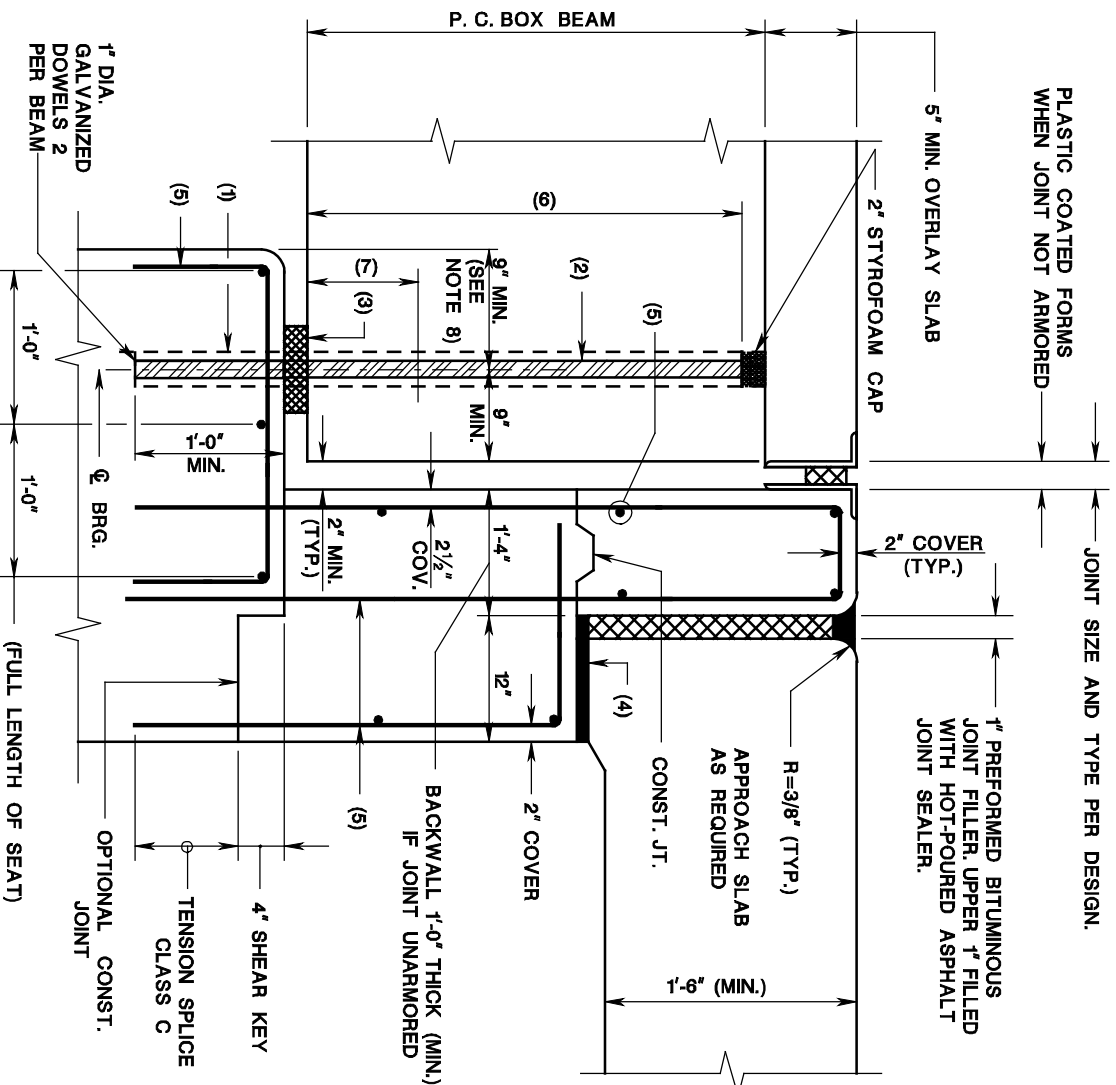


SECTION AT ABUTMENT, PC ADJACENT  
SLAB AND BOX BEAMS

**ISSUED: 2009**

PLATE  
3.10-4

**NOTE: ARMORING NOT REQUIRED FOR SPANS LESS THAN 55'-0".**



**NOTES:**

1. 2" DIA. HOLES IN ABUTMENT SEAT TO BE CORED AFTER BEAMS ARE ERECTED AND THE TRANSVERSE TIES ARE TENSIONED, FILLED WITH NON-SHRINK GROUT.
2. FILL WITH MASTIC OR HOT-POURED RUBBER ASPHALT JOINT SEALER AT THE EXPANSION BEARINGS. FILL WITH NON-SHRINK GROUT OR LOW MODULUS EPOXY MORTAR AT THE FIXED BEARINGS.
3. REFERENCE PLATE 3.10-9 FOR REINFORCED ELASTOMERIC BEARING PAD DETAILS.
4. A 1/4" THICK PIECE OF PREFORMED BITUMINOUS JOINT FILLER SHALL BE LAID IN AND COVERED WITH ASPHALT ROOFING CEMENT ON THE SURFACE WHERE THE APPROACH SLAB SHALL REST.
5. CORROSION PROTECTED REINFORCEMENT.
6. DOWELS CUT 2" TO ALLOW FOR STYROFOAM CAP FOR FIXED BEARING.
7. 4'-0" MINIMUM LENGTH FOR EXPANSION BEARING.
8. SEAT LENGTH SHALL SATISFY SEISMIC DESIGN REQUIREMENTS.